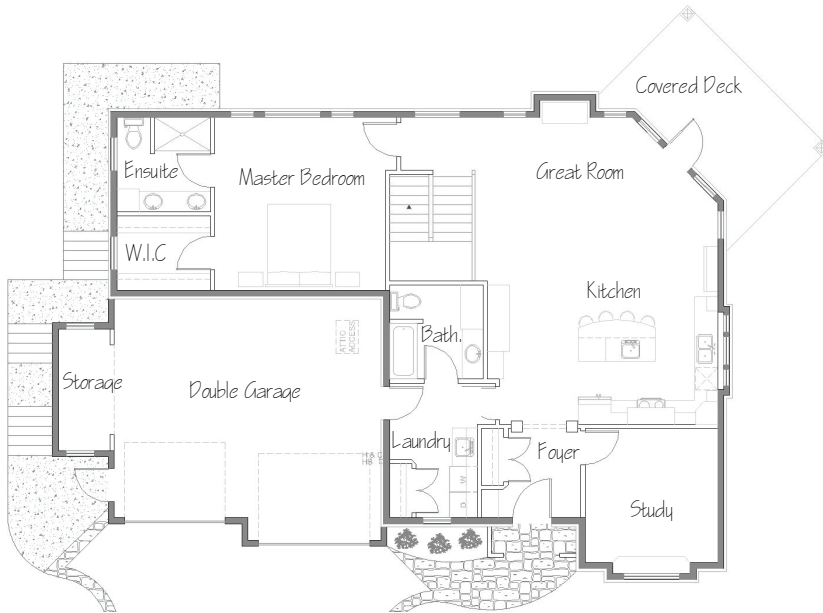
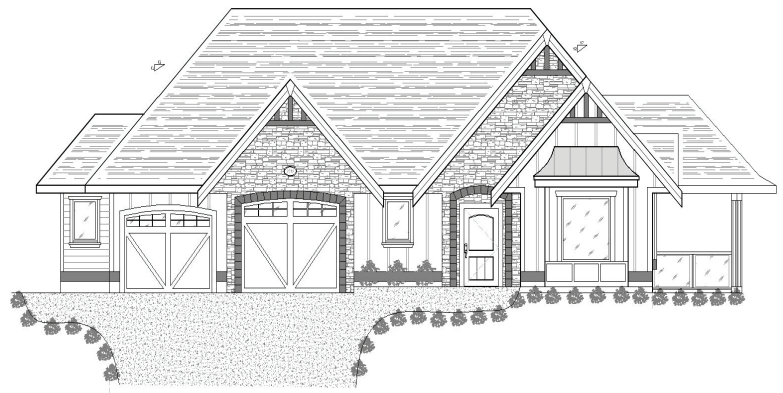
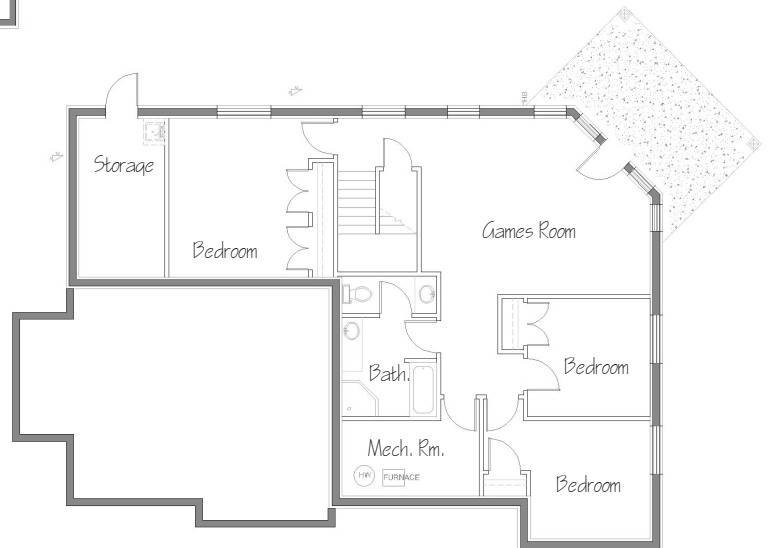


GREEN HAVEN

Spacious R2000 Rancher
 Energy Efficient
 Rain Water Harvesting
 Solar Panels
 One Level Living



Main Floor
 Area: 1,571 sq. ft.
 Garage: 591 sq. ft.



Basement
 Area: 1,555 sq. ft.



This design and drawing remains exclusive property of Sonbuilt Custom Homes Ltd. and cannot be used for construction or be reproduced in whole or in part without written consent from Sonbuilt Custom Homes Ltd.